



Software Installation Guide

Congratulations on your TeeLinx Auto-Tee Up purchase! Below are a few simple steps to help you get started. Prior to software installation, make sure the Keypad module is powered on and plugged into your PC via usb connection.

Once you have plugged in your TeeLinx Auto-Tee Up, open any internet browser and navigate to the following link: <https://golflinx.com/teelinx-download/>

Click the download button to begin your download.

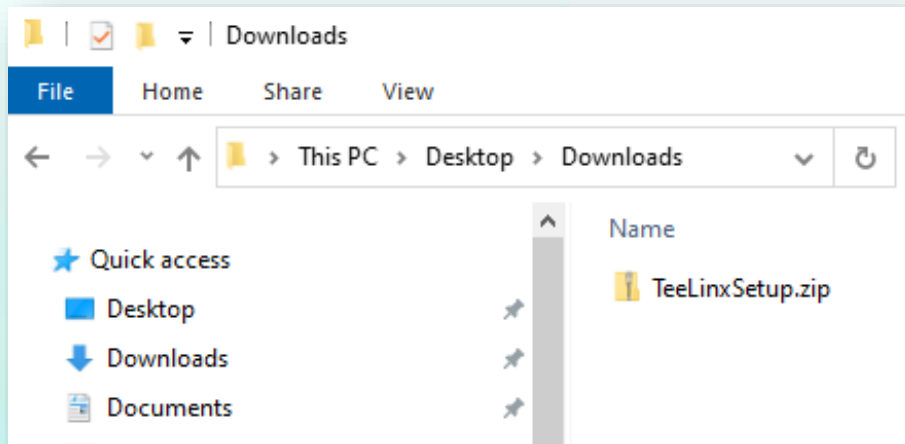
Golflinx Home Auto Tee-up System Services Partnerships Contact

TeeLinx

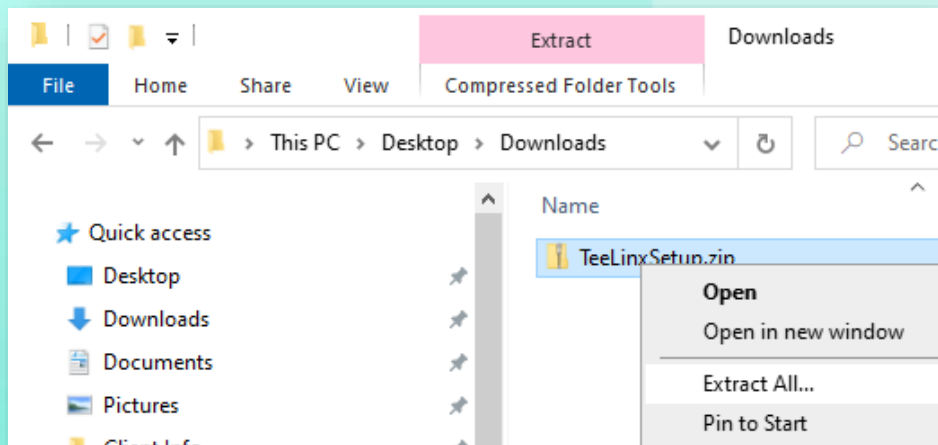
Software Download

Click the download button below to begin your installation.

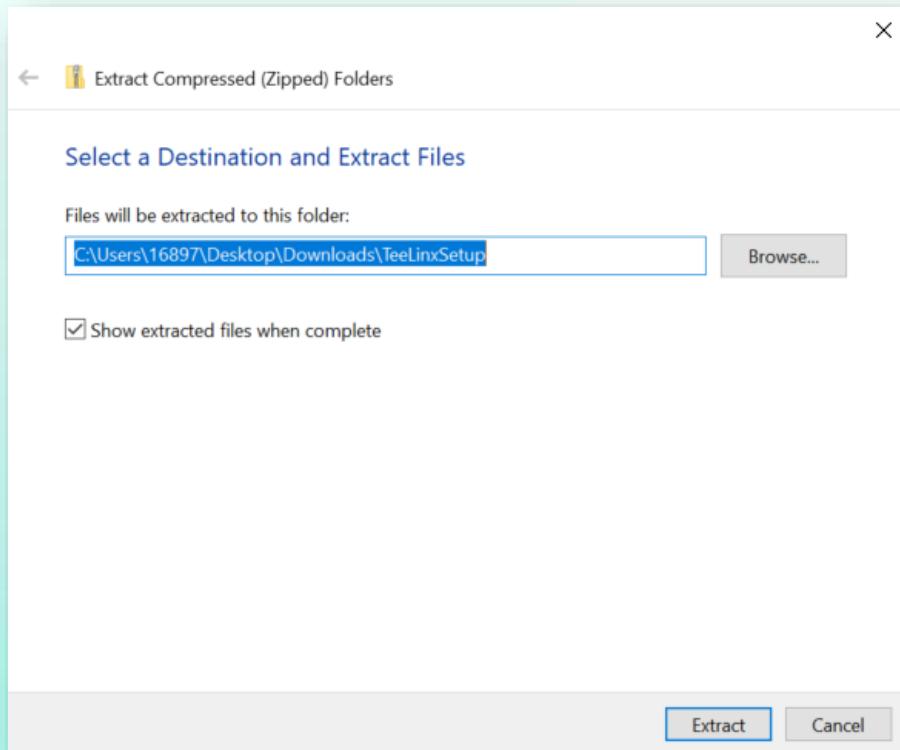
DOWNLOAD INSTALLER ⬇



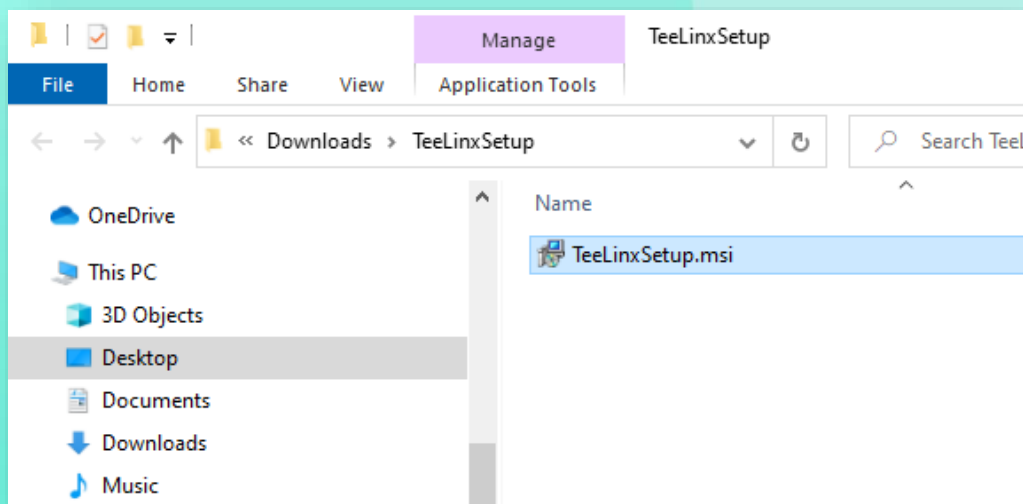
Once your download has finished. Right click the file and select **“Extract All...”**



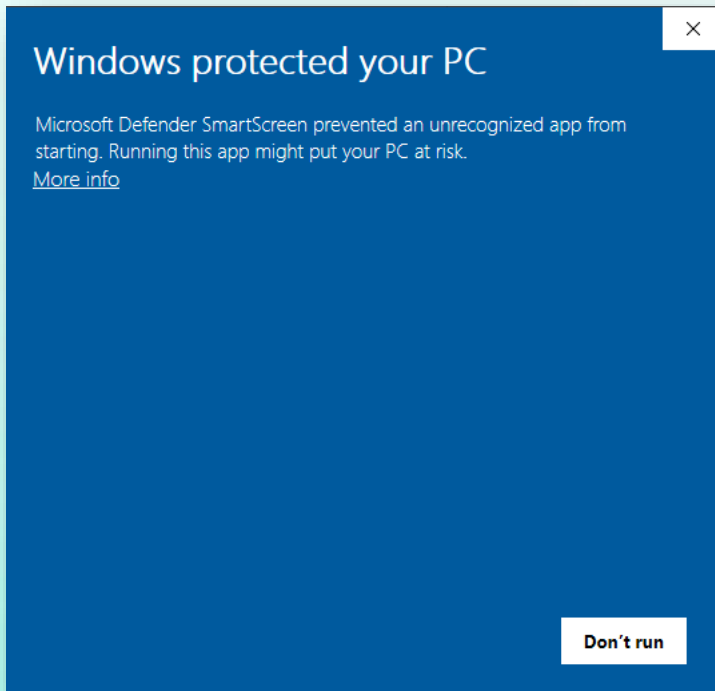
Select a Destination and Extract Files.



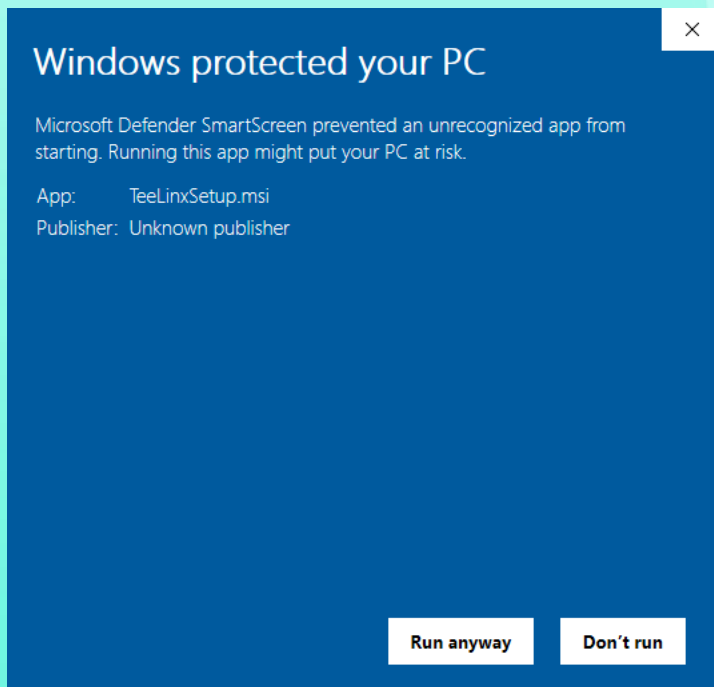
Then **“double click”** the **TeeLinxSetup.msi** file to run.



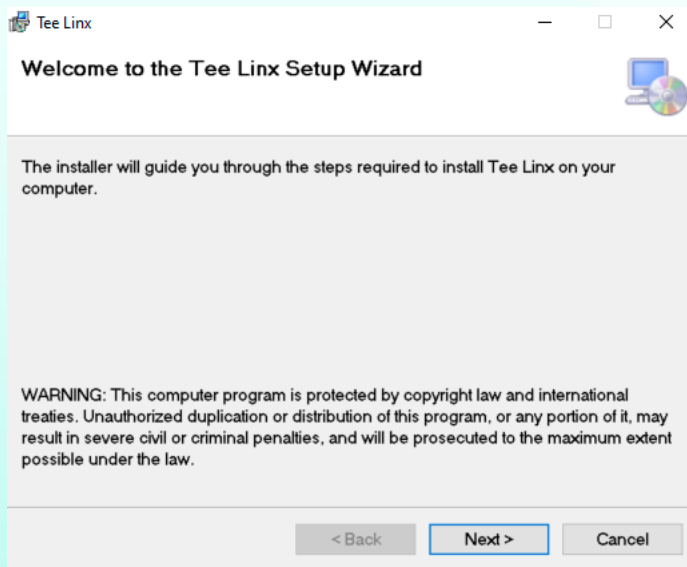
If you receive the following prompt from Windows, Click on the **“More info”** link below the message.



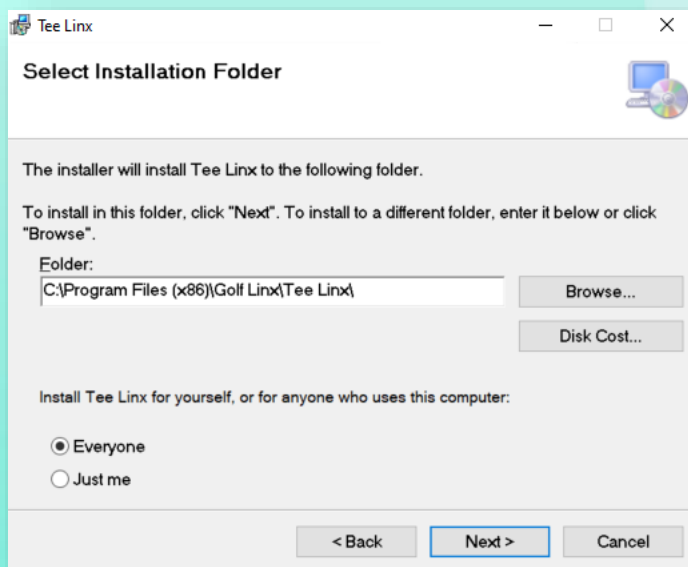
Then choose... **“Run Anyway”**.



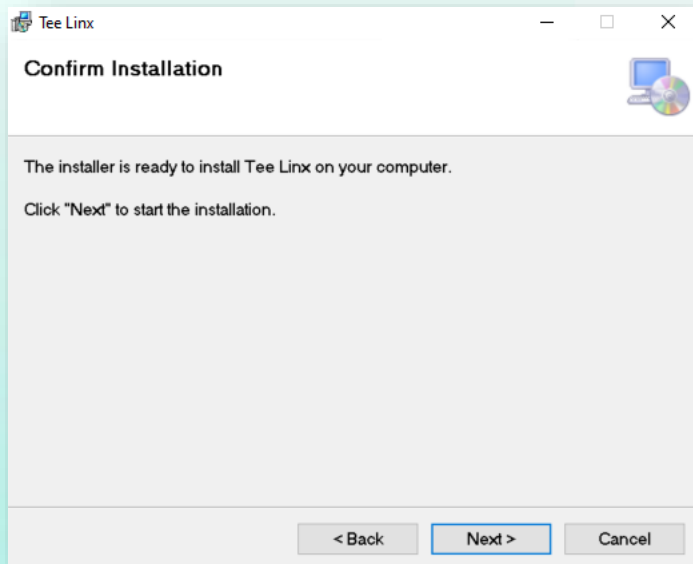
This will prompt the Installation Wizard. Click **“Next”**.



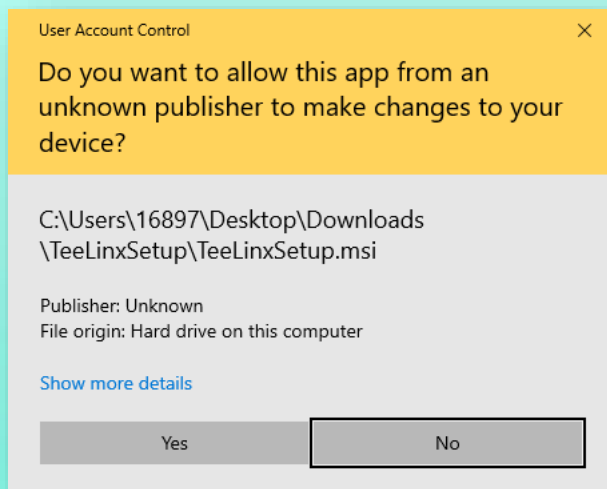
Click **“Next”** again.



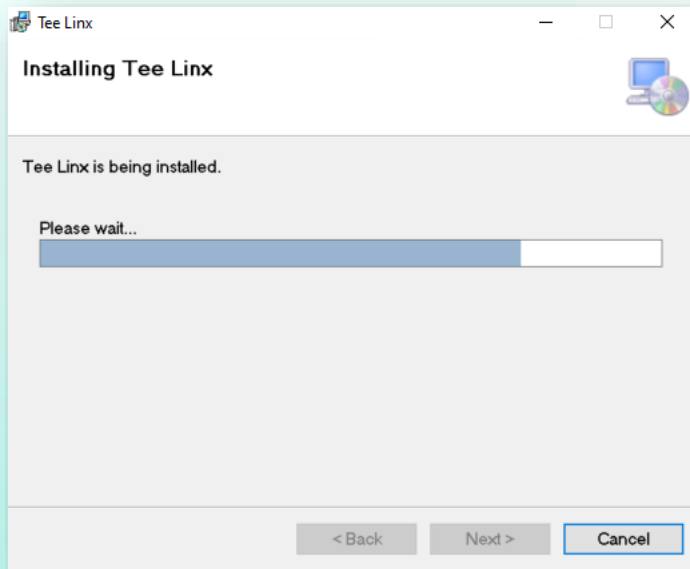
Click **“Next”**.



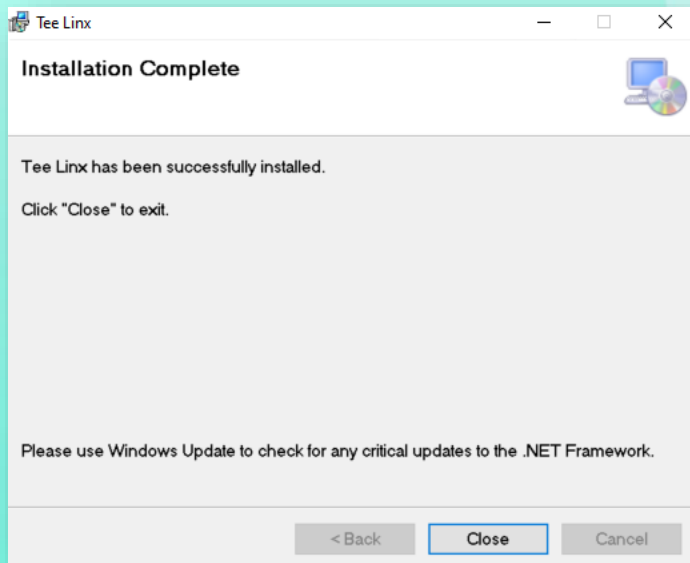
If prompted with the following popup alert. Click **“Yes”**.



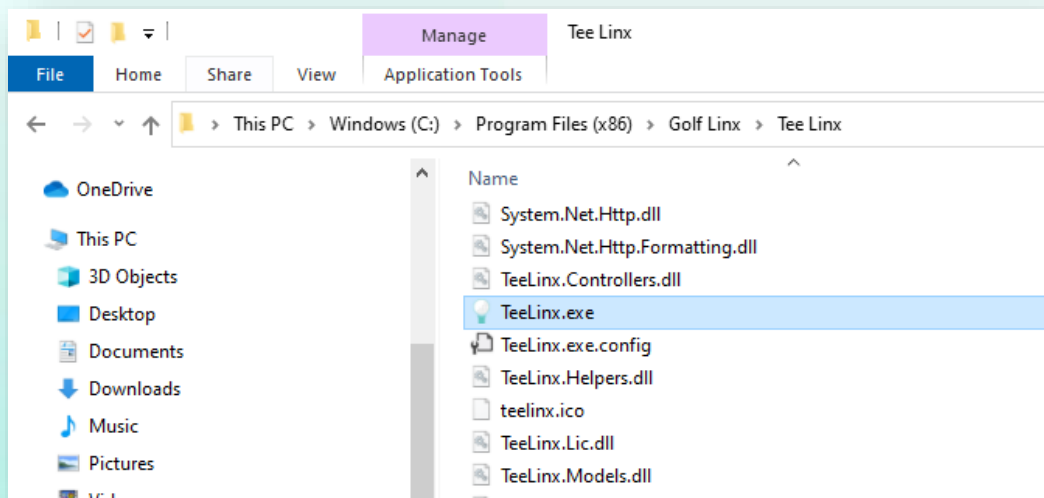
Then wait for the wizard to finish the installation.



Click "Close".



Navigate to the folder pictured below on your PC and **double click** the “**TeeLinx.exe**” file. *Note: In some cases, this may be under the “Program Files” and not “Program Files (x86)”.*



This will launch the TeeLinx Software.



Tee Linx

Welcome to Tee Linx!

Product Registration

Please register your device with the provided serial number



first name



last name



email



company (optional)



serial number

8 characters

Register

Fill out the appropriate information along with the serial number provided by our team.



Tee Linx

Welcome to Tee Linx!

Product Registration

Please register your device with the provided serial number



John



Doe



johndoe@gmail.com



company (optional)



511c9f93

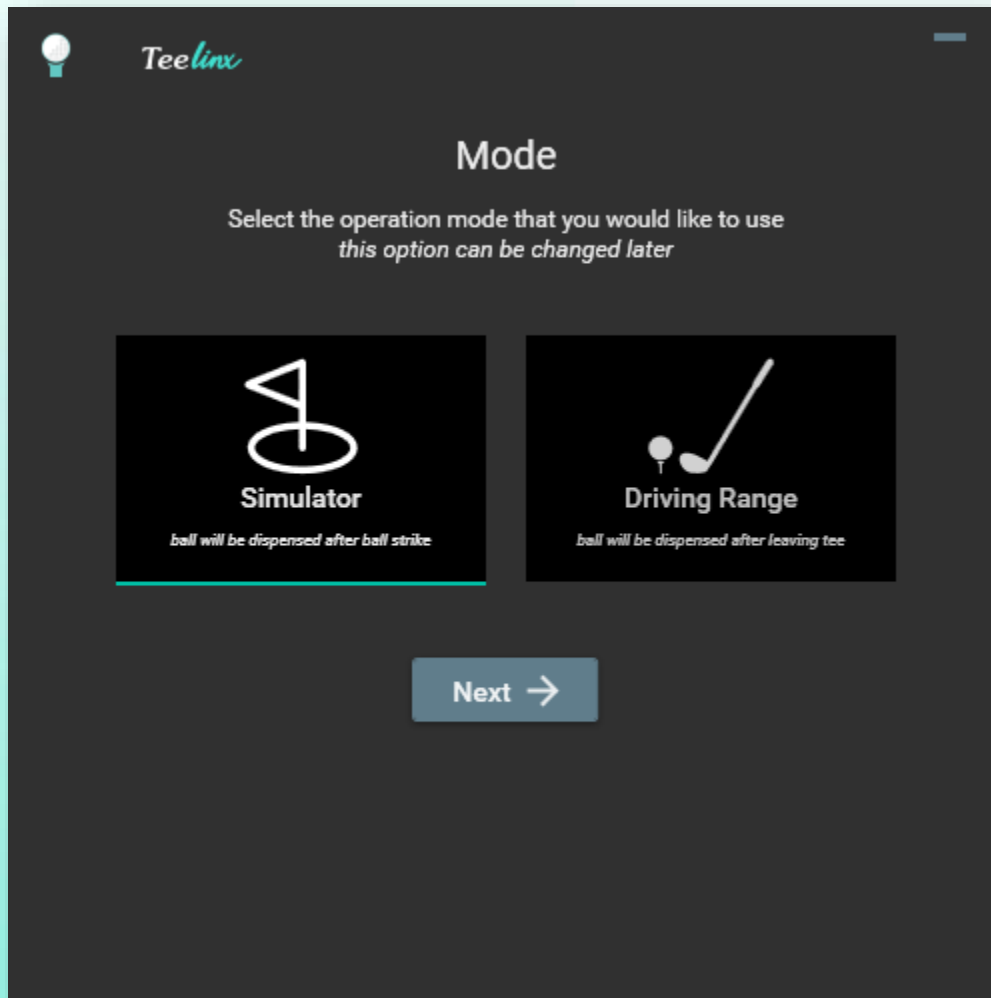


8 characters

Register

Then Click **“Register”**.

Click the appropriate mode for your use and click **“Next”**.



Click on the "UNEKOR" button.



The software will auto-detect the directories below. *Note: These should be populated with text. If these do not populate please contact support@golflinx.com.*

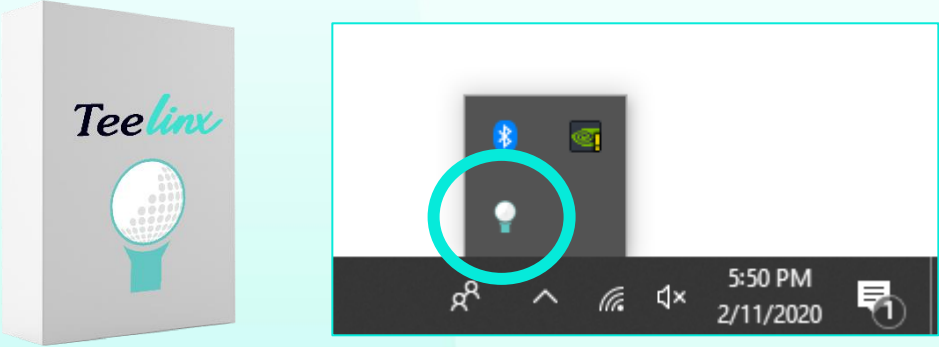
Click **“Save”**.

Uneekor Setup

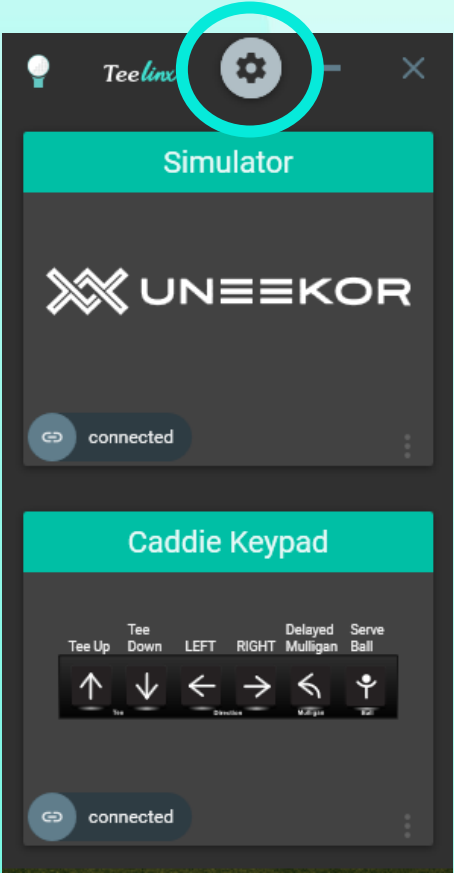
view/ignite dir:

refine/succeed dir:

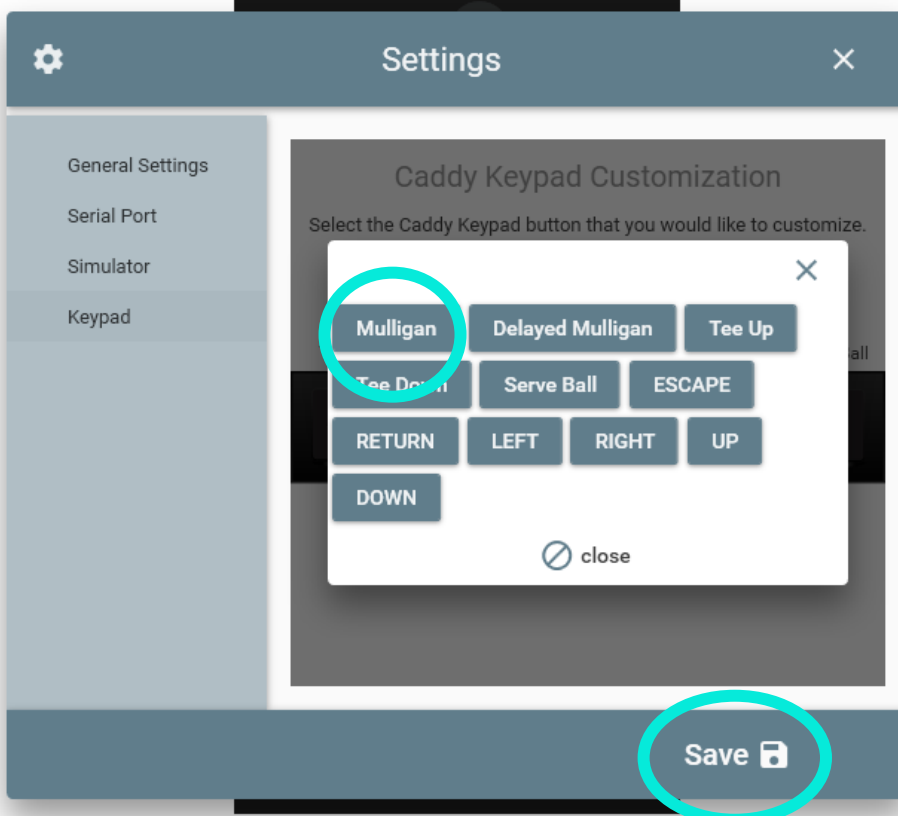
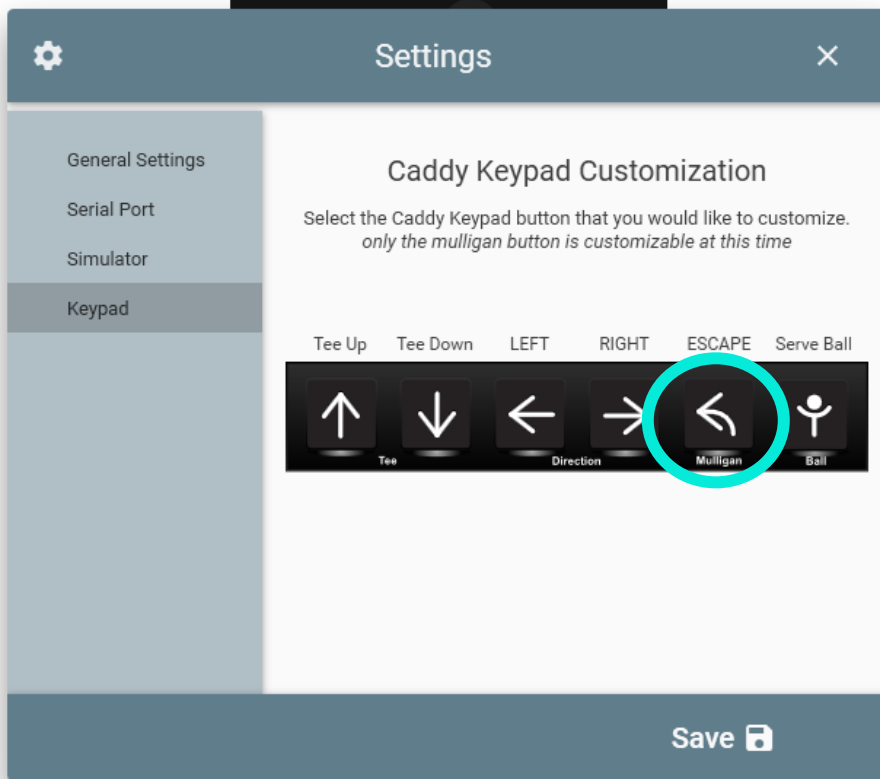
Once installed and configured the TeeLinx software runs automatically in the background every time the computer is fired up.



The software integrates with simulators and enables users to customize their Keypad buttons in the settings panel.



Easy to use interface allows users to click on the Keypad button they wish to set where they can choose from the list of available actions.



For troubleshooting please contact:

***Golf*linx**

Golflinx.com | support@golflinx.com

2323 Main St. Irvine, CA